



# Heavy Duty Hydraulic Traffic Barrier Arm

## HTG 320

TEN YEARS AGO, WHEN **Hy-Security** first developed the concept of the heavy duty hydraulic barrier arm operator, high maintenance and frequent breakdowns were the norm for this type of equipment. The **HTG** series operator changed all that by replacing the relatively inefficient and expensive gearbox with sophisticated hydraulics, and beefing up the shaft, bearings and structural support. Adding unprecedented precision, the arm could, at rest, be positioned either fully open or fully closed. Today's state-of-the-art **HTG 320** is the most reliable, highest quality barrier arm operator on the market. From its premium triple-voltage electric motors and heavy duty components, to its unibody chassis construction and superior five step baked-on powder paint finish, the **HTG 320** is engineered and tested to a level not available from any other manufacturer. Add in our five year warranty, and it's easy to see why **Hy-Security** Gate Operators is the industry leader.

### Features:

- **Sophisticated Hydraulic Design**  
No gearbox, chains, sprockets, belts, clutches or rotary limits to maintain
- **Design Rate: 2000 cycles per day**
- **Flexible 24-Volt Control Circuit**
- **Soft Stop Standard**  
To reduce wear and prolong the life of the installation
- **Anti-Corrosion Finish**  
Entirely electroplated, then coated with a high gloss powder paint finish (-6 & -8 models are galvanized and include a stainless steel cover)
- **5-Year Limited Warranty**
- **Heavy Duty Components**  
3/4 HP motor handles arms up to thirty-six feet in length



### Options for the HTG 320:

- **Battery Powered Models**  
All HTG Barrier Arm operators are available with 24-VDC motors and uninterruptable power supplies
- **Power Failure Default**  
Option to automatically close on power failure
- **Flashing Warning Lights**
- **Custom Arm Materials**

### Other Models Available:

- **HTG 320-2**  
Two seconds to open, three seconds to close, 14-ft arms; single aluminum/fiber-glass or wooden wishbone designs
- **HTG 320-3**  
Three seconds to open, four seconds to close, 20-ft arms; single aluminum/fiber glass or wooden wishbone designs
- **HTG 320-6**  
Five seconds to open, seven seconds to close, 28-ft arms; single aluminum/fiber-glass or wooden wishbone designs
- **HTG 320-8**  
The heaviest duty of the operators, (shown at left) will handle arms up to 36-feet long. Eight seconds to open, eight seconds to close.



**Hy-Security** Gate Operators

Phone: 1-800-321-9947

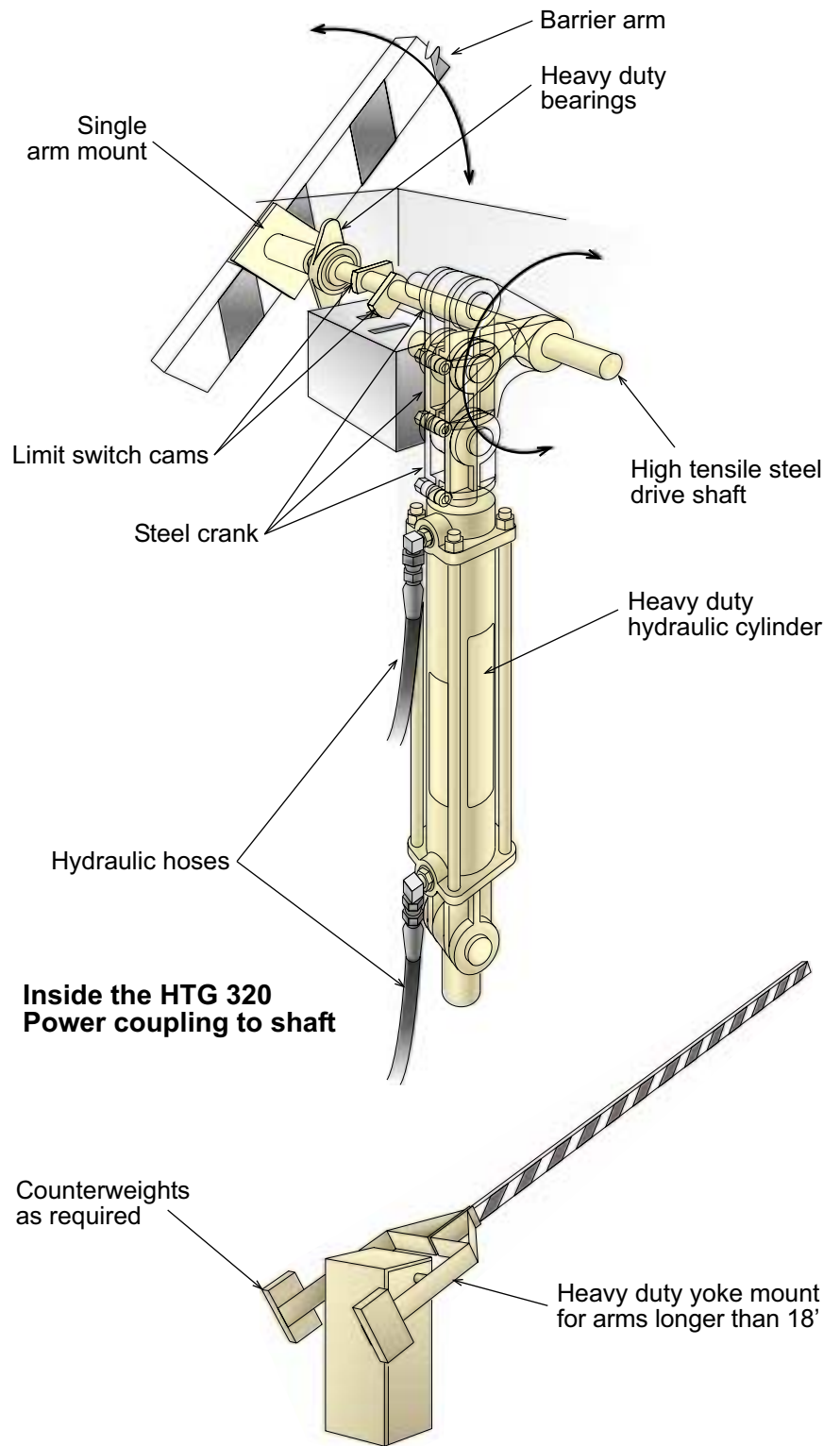
FAX: (206) 286-0614

Internet: [www.hy-security.com](http://www.hy-security.com)

E-mail: [Info@hy-security.com](mailto:Info@hy-security.com)

# Particulars of the HTG 320 Barrier Arm Operator:

- This gate operator has been in production for over ten years.
  - The HTG 320 has been tested to over one million cycles without failure.
  - Minimum opening speed is 2 seconds.
  - Mounting bolts are concealed in the interior of the operator.
  - Maximum arm length is thirty-six feet.
  - Chassis is formed steel plate, and incorporates unibody construction to assure structural integrity.
  - The standard color is Safety Yellow.
  - The cover is galvanized sheet metal.
  - Cover and chassis are finished with a five step baked-on powder paint job to provide excellent corrosion resistance.
  - All components are designed for easy removal during service.
  - The hydraulic system features the latest technology, modular manifolds and individually replaceable cartridge valves. This technology enables the HTG 320's smooth *soft start* and gentle *soft stop* features to keep the barrier arm fully under control at all times, preventing shock loads to the operator.
  - Cover comes standard with a keyed lock.
  - Fully compatible with all standard access control equipment.
  - Accessories include heaters, timers, detectors, photo eyes, gate edges, release for manual operation, and master/slave units.
- Fully-formatted specifications and detailed drawings are available upon request.**



*distributed by:*



manufactured by:  
**Hy-Security Gate Operators**  
 PO Box 31532 • Seattle, Washington 98103