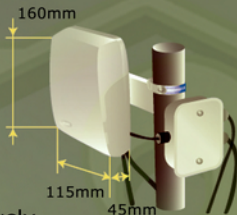
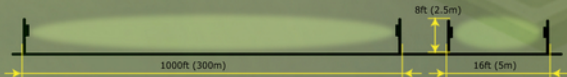


# R300

## MICROWAVE INTRUDER DETECTOR



The detector is designed to continuously learn and adjust to changing weather and terrain conditions.



R300	
Length of protected zone	Up to 1000ft (300m)
Speed of detecting a walking or a crawling human	0.3...10 ms
Intruder detection probability	98%
Ready for operation after power up	30 sec
Ready for operation after alarm	0.5 sec
Allowed irregularities (mounds, etc) in protected zone	Up to 1ft (0.3m)
Allowed grass level	Up to 1ft (0.3m)
Allowed snow level, without adjustment	Up to 1.64ft (0.5m)
Output signal type:	
Disconnection of "dry" contacts, for the duration of the intruders' presence in the detection zone,;	3 seconds
Signal relay parameters	Voltage 72 V, 0.1 A
Detection zone width (at maximum length)	16ft (5m)
The detector won't react to small birds and animals and also to power disruptions/surges	Up to 100 ms
Detector testing	Can be done remotely
Detector power requirement	10.5...30V DC
Detector power consumption	0.7 W with 12V DC power
Size (without bracket)	6.3"x4.5"x1.7" (160x115x45mm)
The detector is built to withstand the following weather conditions:	-58~ +149°F (-50~ +65°C) and up to 100% relative humidity, with +77°F (+25°C) air temperature

45 Brisbane Rd., Unit 11  
Toronto, ON, M3J 2K1, Canada

Tel: +1(416) 657-4434  
Fax: +1(416) 650-9012

US Toll Free: +1-866-534-2STR  
email: sales@strsecurity.com