



## Wood Arm Folding Kit Installation Instructions

### ANCHOR BOLT

1. Remove the hole-plug from the side of the 1601 operator that the arm is to be installed on.
2. Install the anchor bolt as shown. Be sure to place the cable assembly with the pre-crimped end between the two 1/2-inch washers as shown in Figure 1.

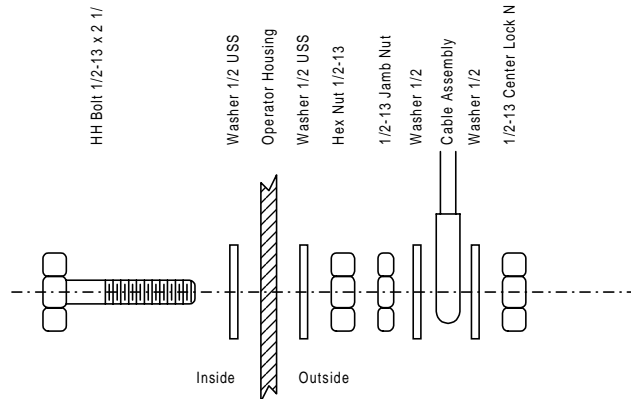
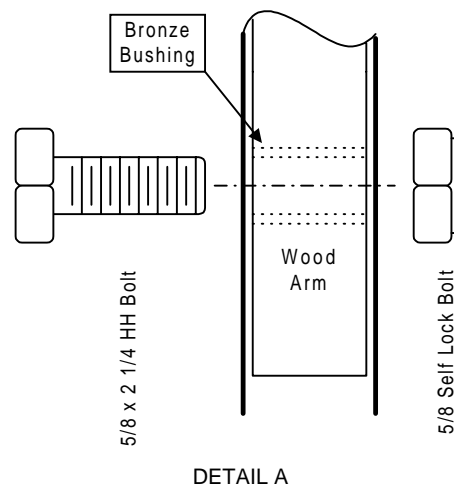


Figure 1

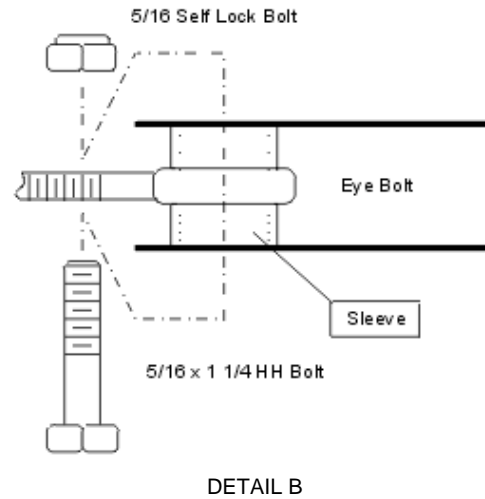
### ARM and BRACKET INSTALLATION

1. Be sure that the wood-arm mounting bracket is installed as described in the 1601 installation manual.
2. Install the half-arm with the angle cut and single hole into the arm bracket on the 1601 operator. Be sure that the bracket is positioned to install the arm in the DOWN position and that the angle cut is positioned as shown in Figure 3.
3. Install the two-piece triangular bracket onto the half wood-arm using the supplied bronze bushing, 5/8 x 2 1/4 HH bolt and the 5/8 self locking nut (Detail A).



## CABLE and TURNBUCKLE INSTALLATION

1. Install the turnbuckle and eyebolt assembly onto the triangular bracket using the supplied sleeve bearing, 5/16 x 1-1/4 HH bolt and 5/16 self-lock nut (Detail B).
2. Insert the remaining end of the cable that was attached to the 1601 operator through the remaining eyebolt on the turnbuckle and secure it with the cable clamp supplied (Figure 2).



## FINAL INSTALLATION and ADJUSTMENT

1. Install the remaining half of the wood arm onto the triangular bracket assembly. Secure with four 1/4 x 1-1/4 HH bolt, lock washer and nut.
2. Rotate the arm to the up position. Be sure that the cable is not binding and that the arm freely goes up.
3. Rotate the arm to the down position. Once you are sure that the cable is adjusted correctly, tighten the screws on the cable clamp and trim off the excess cable.

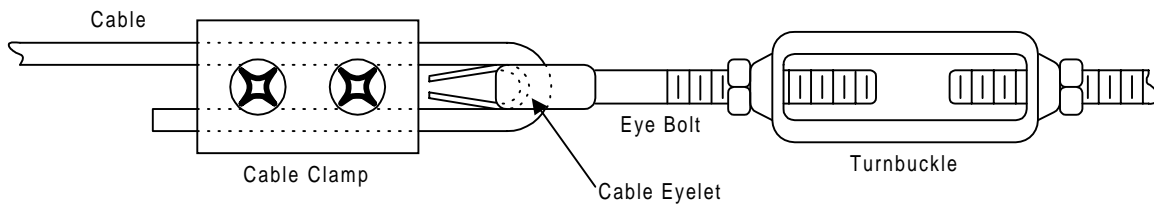


Figure 3

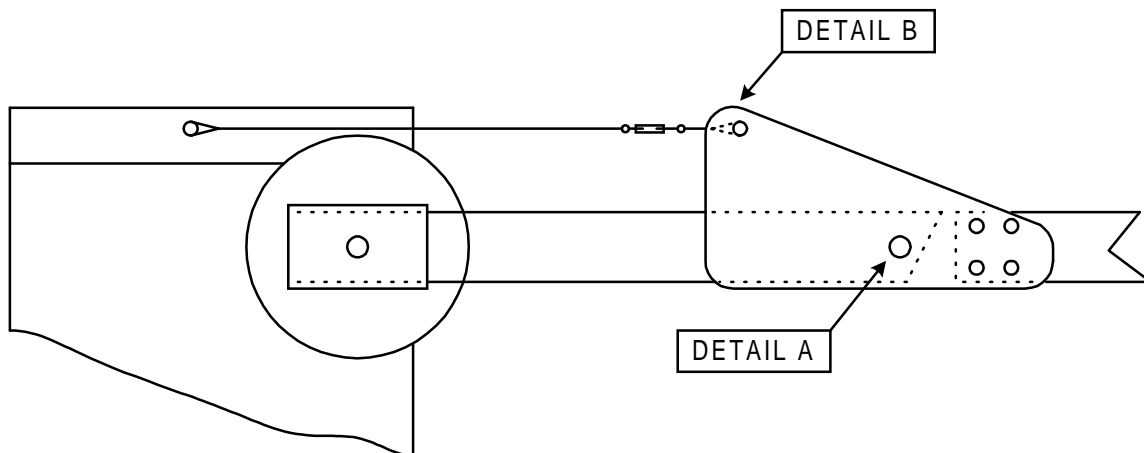


Figure 2