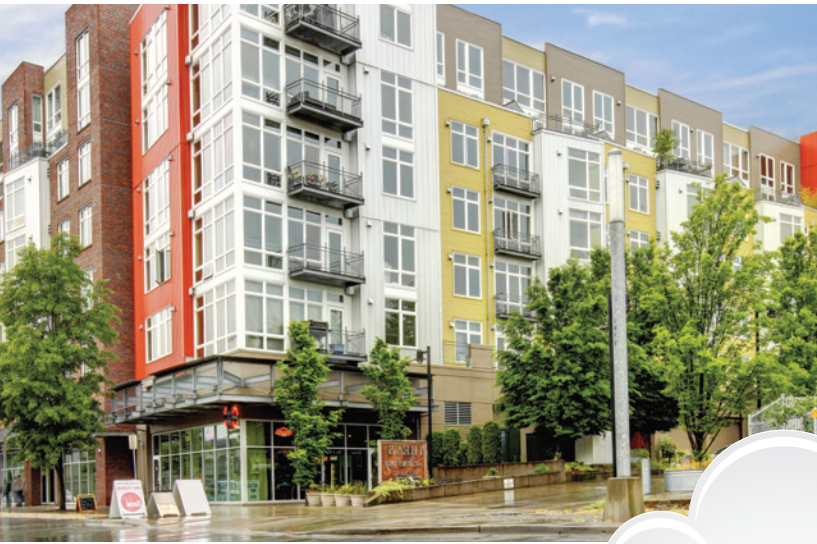


# Internet Protocol Access Control **IPAC**



## **Empowered Access Control**

**IPAC**, with **LiftMaster Cloud™** is an easy-to-use guest and resident access management solution allowing users to work more efficiently. With 24/7 remote access, users have the power to instantly monitor and manage the property from anywhere.

### **INCLUDED:**

**Passport Credential  
Access Receiver  
(PPWR)**



# **LiftMaster®**

# IPAC: A Robust Solution that Empowers and Exceeds Customer Expectations

**The First Internet-Enabled** outdoor access control system with Voice over Internet Protocol (VoIP)

**Aircraft Aluminum Alloy Front Panel** is rust-, scratch- and dent-resistant

**Weathertight Construction** (IP65 rated) is built to withstand the elements and demands of everyday use

**Endures -20°F to 130°F**, providing year-round protection



**Intuitive, 10" Touchscreen Interface** is easy to use by both residents and guests

**Full On-Screen Keyboard** lets guests quickly find a resident's name without scrolling

**Anti-Glare, Reflective Coating and Auto-Dimming** allow easy readability in any light

**Durable Protective Screen** survives constant use while maintaining its responsiveness and readability



## Door Controller: Expand Your IPAC Solution

### Internet Protocol Door Controller (IPACIPDCC)

Manage additional access points with LiftMaster's plug and play Cloud-supported access Door Controller. When each Door Controller is connected to the LiftMaster Cloud™ via DSL or high-speed internet, it allows credentialed management of two entrances.

## Add to Your System



### Camera Kit (IPACCAMK)

High-performance CCTV camera for applications requiring visual monitoring.



### HID ProxPoint Plus 6005 RFID Reader (SNARHIDPOINT)

Proximity reader provides multiple configuration options and is both sleek and inconspicuous.



### Postal Lock (IPACPLB)

Meets postal requirements while offering flexibility for right- or left-sided installations.

# LiftMaster Cloud™

Access Control Management for the IPAC and IPACIPDCC

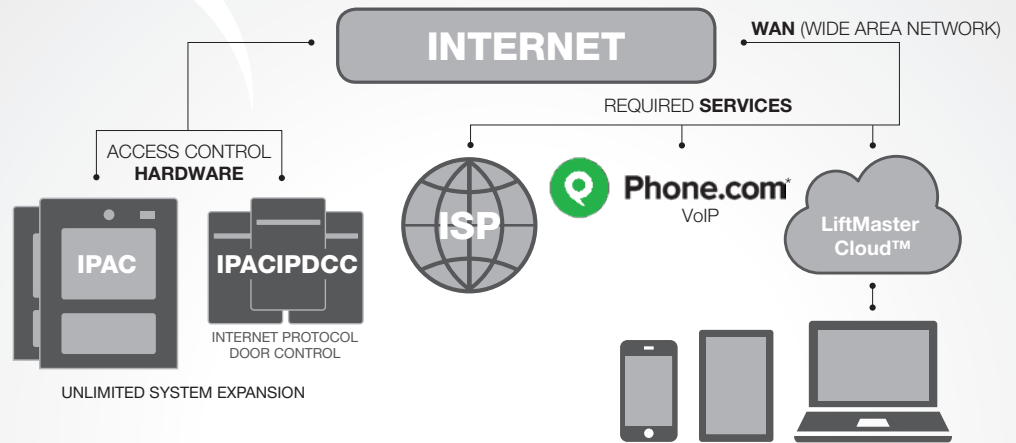
Instantly manage all of your access points using the LiftMaster Cloud™ via DSL or high-speed internet.

## Work More Efficiently

- Make updates remotely 24/7 (no software to install), so you never have to take an IPAC offline
- VoIP technology eliminates long-distance fees and replaces old analog phone lines

## Unlimited Expansion

- Network as many gates and doors as required
- Remotely manage multiple sites from a single login
- Customizable admin permission levels

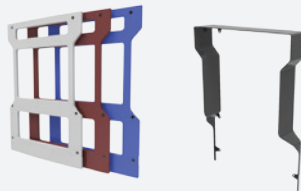


\*Visit [Phone.com/LiftMaster](http://Phone.com/LiftMaster) for more information.



### IPAC Retrofit Trim Ring (IPACRTR)

Makes installation easy when replacing both flush mount Infinity L and ICON 26 models.



### IPAC Trim Kit (IPACTRK)

Paintable faceplate and shroud permit color customization. Metal shroud ensures screen visibility even in direct sunlight.





### IPAC Keypad (IPACKEY)

For customers needing multiple keypad options, this external keypad can be mounted on IPAC.

# Internet Protocol Access Control

# IPAC

		
FEATURE	INTERNET PROTOCOL ACCESS CONTROL (IPAC)	INTERNET PROTOCOL DOOR CONTROLLER (IPACIPDCC)
LIFTMASTER CLOUD™ FEATURES		
Real-Time Event Monitoring	Yes	
Event History Storage	1 Year	
Remote Management Using Tablet/PC/Smartphone	Yes	
Real-Time Database Updates	Yes	
Expandability of Gates/Doors	Unlimited	
Resident Database	+100,000	
Data Communication	DSL/High-speed internet	
Voice Communication	VoIP over DSL/High-speed internet	—
SIP/VoIP Service	Phone.com service required	—
Real-Time Notifications	Yes	
Anti-Passback	Yes	
Multiple Access Levels	Yes	
Multiple Schedules	Yes	
Holiday Schedules	Yes	
Hold Open Schedules	Yes	
LiftMaster Cloud™ Subscription	Required	
PRODUCT FEATURES		
Number of Gates/Doors of Control*	2	2
Entry Codes (4-8 Digit Length)	Yes	Yes (using KPR2000)
Directory Codes	4-6 digits	—
Resident Capacity	50,000	25,000
Event History	50,000	6,000
Display Type	10" color touch	Multi-status LEDs
Receiver Included	Yes (PPWR with Security+ 2.0®)	—
Postal Lock	Optional/External	
Mounting Options	Surface/Flush/Gooseneck	Surface mount on electrical gang box
Power Supply	120 VAC to 16 VDC transformer (included)	POE or 12 VDC (not included)
Camera Ready	Yes	—
Outdoor Rated	Yes	—
Temperature Specifications	-20°F to 130°F (-29°C to 54°C)	32°F to 125°F (0°C to 52°C)
Warranty	2 Years	

**Sales Support: 800.282.6225**  
**Technical Support Center: 800.528.2806**  
**LiftMasterDealer.custhelp.com/app/ask**

\*Each Gate/Door of Control includes: 1 Wiegand input, 1 primary relay, 1 auxiliary relay, 1 request to exit (REX) input, and 1 supervised input

## ADDITIONAL ACCESSORIES



### Single Entry Access Control Keypad and Proximity Reader (KPR2000)

A secure and vandal-resistant controller. This keypad and proximity card reader is simple to install and looks great.



### Passport MAX and Passport Lite Remote Controls (PPV3M, PPK3PHM, PPLK1-X)

LiftMaster remote controls with unique credentialed ID can be used with an access control system. Remote controls are available in three models: visor, keychain and keychain with proximity sensor. Visit LiftMaster.com to view all models.

